



SOLIDWORKS Electrical: WIRED UP

Garrett Klein
Application Engineer
Quest Integration

Today's Topics

- Making the Most of the Project Manager
- Collaborating with Mechanical
- Symbols
- Manufacturer Parts Library
- Snapshots
- Revisions
- Editing Titleblocks
- Online Content
- Mixed Schemes
- Libraries
- Customizing SOLIDWORKS Electrical

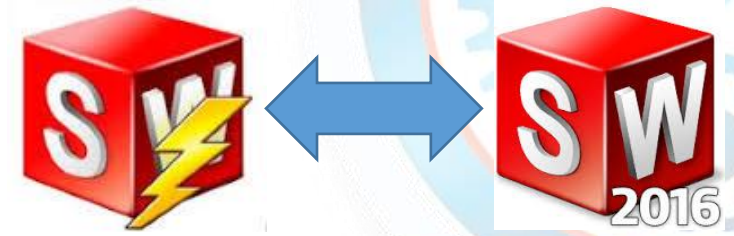


Making the most of the Project Manager

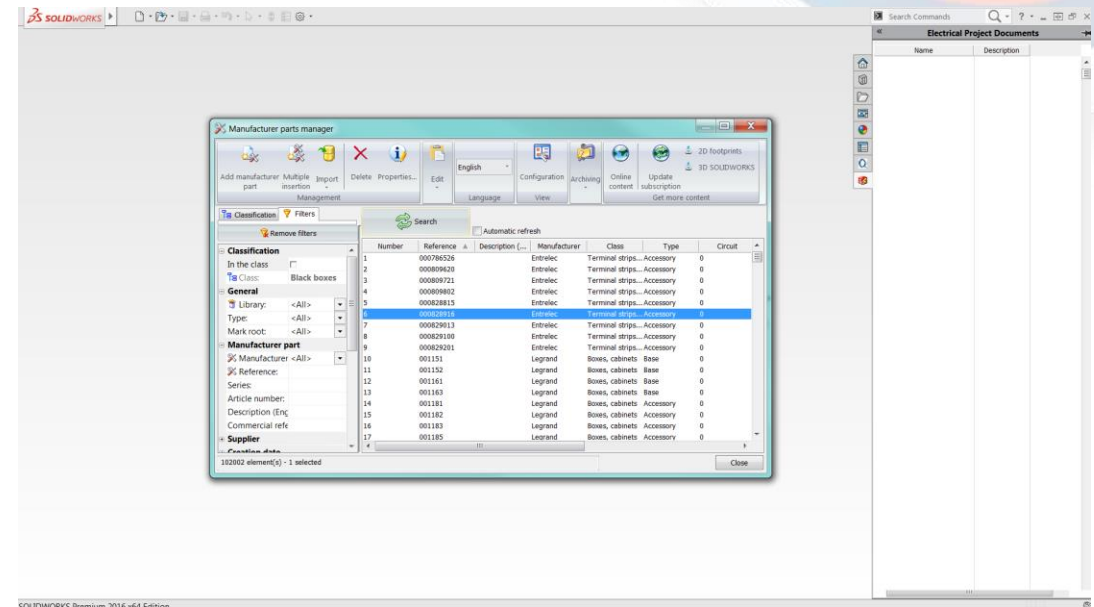
- Fill out project data
- Put a lot in description
- Duplicate Projects
- Archive Projects
- Seeing who is working on what



Collaborating with Mechanical

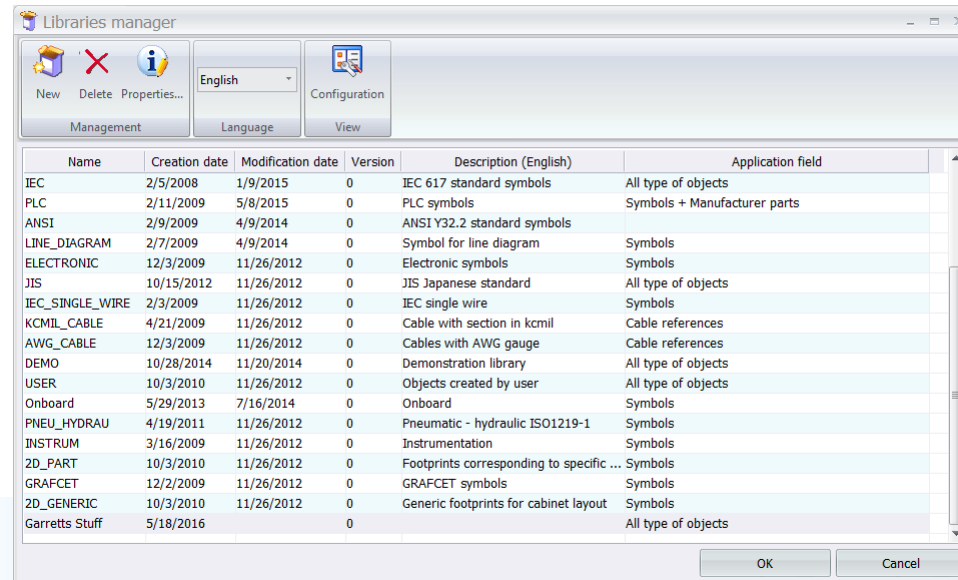


- SW add-in
- Send messages
- Same parts manager
- Cabinet assembly structure



Symbol Tips

- Stick to a unit system and standard(METRIC or IMPERIAL)
- The default snap spacing in a symbol drawing is 1mm. For a schematic drawing the default snap spacing is 2.5mm.
- Add to a Library if you ever want to use it again!!!



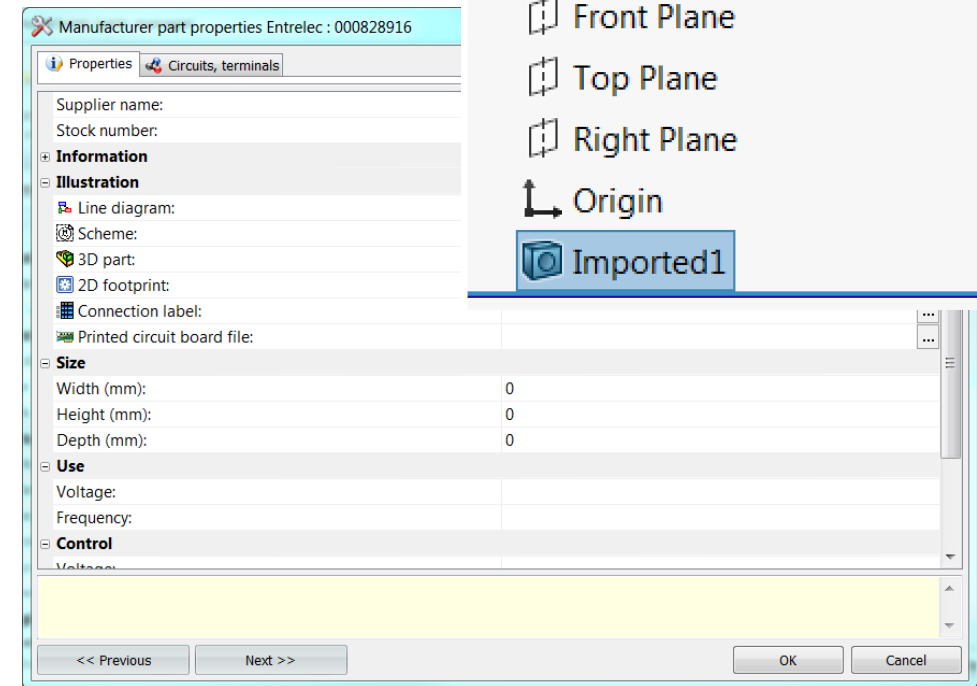
The screenshot shows the 'Libraries manager' dialog box with a table of symbol libraries. The table has columns for Name, Creation date, Modification date, Version, Description (English), and Application field. The libraries listed include IEC, PLC, ANSI, LINE_DIAGRAM, ELECTRONIC, JIS, IEC_SINGLE_WIRE, KCMIL_CABLE, AWG_CABLE, DEMO, USER, Onboard, PNEU_HYDRAU, INSTRUM, 2D_PART, GRAFCET, 2D_GENERIC, and Garretts Stuff.

Name	Creation date	Modification date	Version	Description (English)	Application field
IEC	2/5/2008	1/9/2015	0	IEC 617 standard symbols	All type of objects
PLC	2/11/2009	5/8/2015	0	PLC symbols	Symbols + Manufacturer parts
ANSI	2/9/2009	4/9/2014	0	ANSI Y32.2 standard symbols	
LINE_DIAGRAM	2/7/2009	4/9/2014	0	Symbol for line diagram	Symbols
ELECTRONIC	12/3/2009	11/26/2012	0	Electronic symbols	Symbols
JIS	10/15/2012	11/26/2012	0	JIS Japanese standard	All type of objects
IEC_SINGLE_WIRE	2/3/2009	11/26/2012	0	IEC single wire	Symbols
KCMIL_CABLE	4/21/2009	11/26/2012	0	Cable with section in kcmil	Cable references
AWG_CABLE	12/3/2009	11/26/2012	0	Cables with AWG gauge	Cable references
DEMO	10/28/2014	11/20/2014	0	Demonstration library	All type of objects
USER	10/3/2010	11/26/2012	0	Objects created by user	All type of objects
Onboard	5/29/2013	7/16/2014	0	Onboard	Symbols
PNEU_HYDRAU	4/19/2011	11/26/2012	0	Pneumatic - hydraulic ISO1219-1	Symbols
INSTRUM	3/16/2009	11/26/2012	0	Instrumentation	Symbols
2D_PART	10/3/2010	11/26/2012	0	Footprints corresponding to specific ...	Symbols
GRAFCET	12/2/2009	11/26/2012	0	GRAFCET symbols	Symbols
2D_GENERIC	10/3/2010	11/26/2012	0	Generic footprints for cabinet layout	Symbols
Garretts Stuff	5/18/2016		0		All type of objects



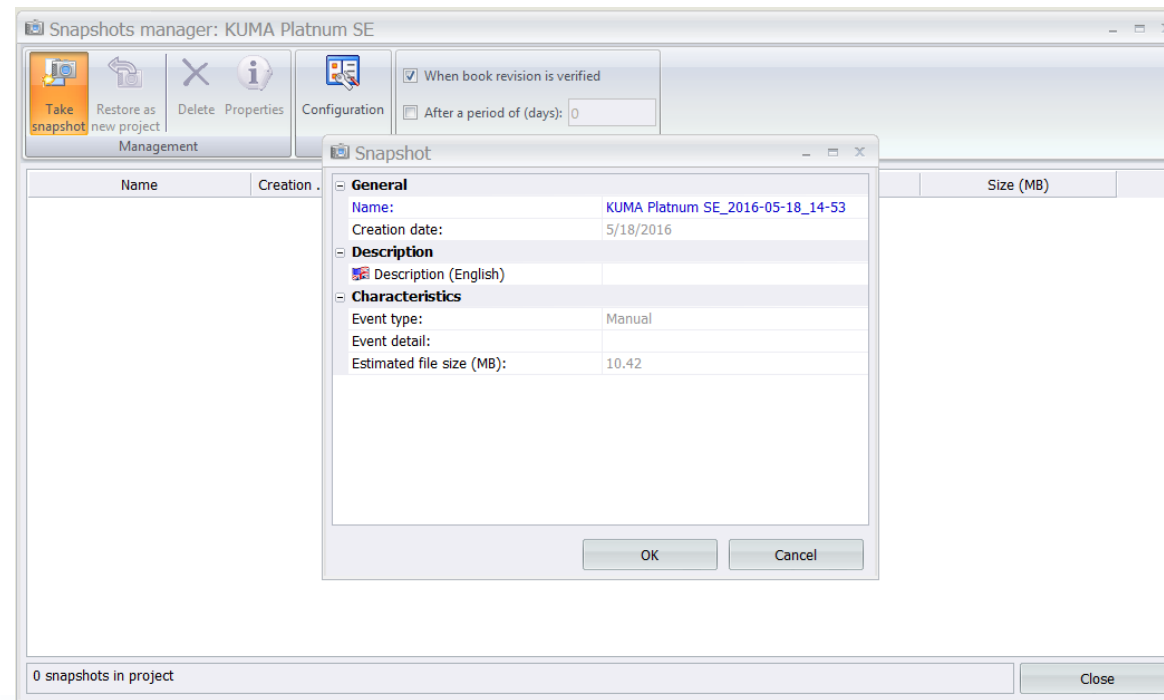
Manufacturer Parts Library

- Name models after Parts Library Reference
- Import old Excel BOM(IMPORT-VIDEO)
- Add circuit information(Optional)
- Download Content(Trace-VIDEO)
- Use imported geometry
- Fill out Size for auto scaled 3D parts



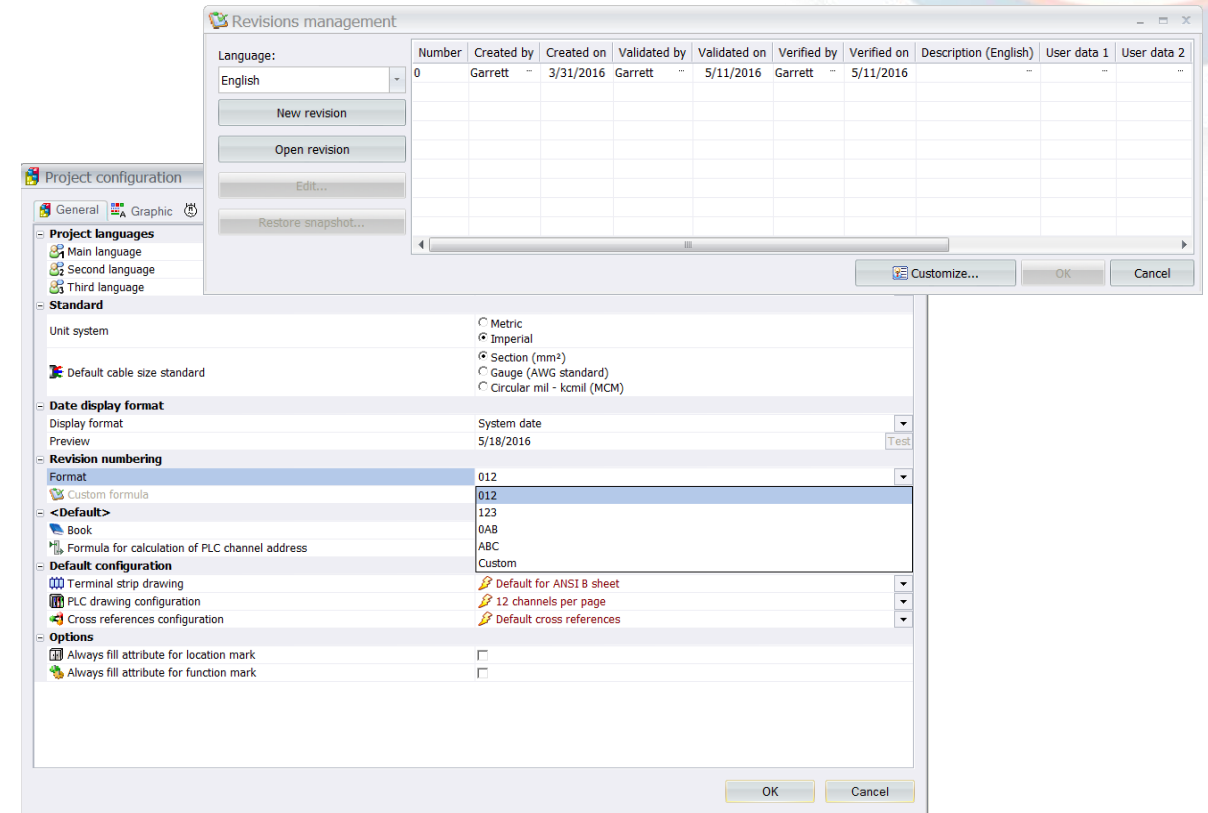
Snapshots

- New In 2016
- Way to restore a project back to a previous version



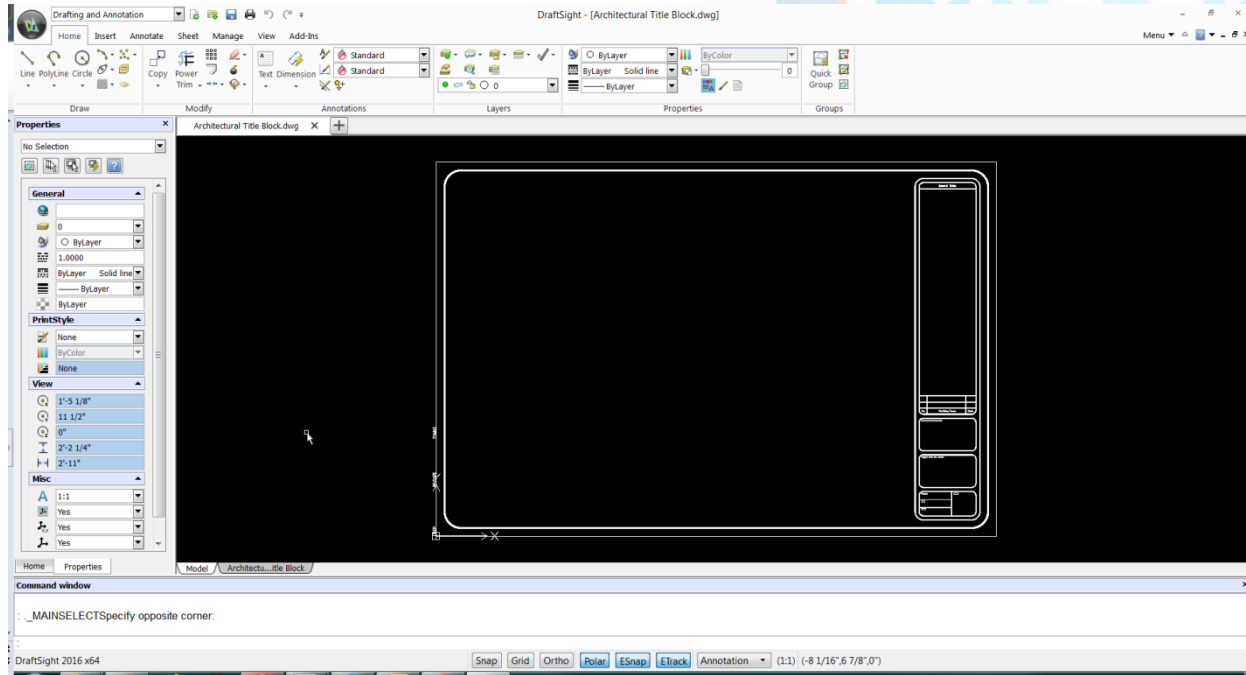
Revisoning/Approvals

- Create new revision
- Validate Revision
- Verify Revision
- Optional Print/Create Snapshot



Editing Titleblocks

- Import Titleblock using Draftsight
- Delete unused text fields
- Insert attributes
- Use DWG import for titleblocks



Online Content

- Tracepartsonline.net
- [SOLIDWORKS Electrical Portal](#)
- [3D Content Central](#)
- My.Solidworks.com
- [Grabcad](#)

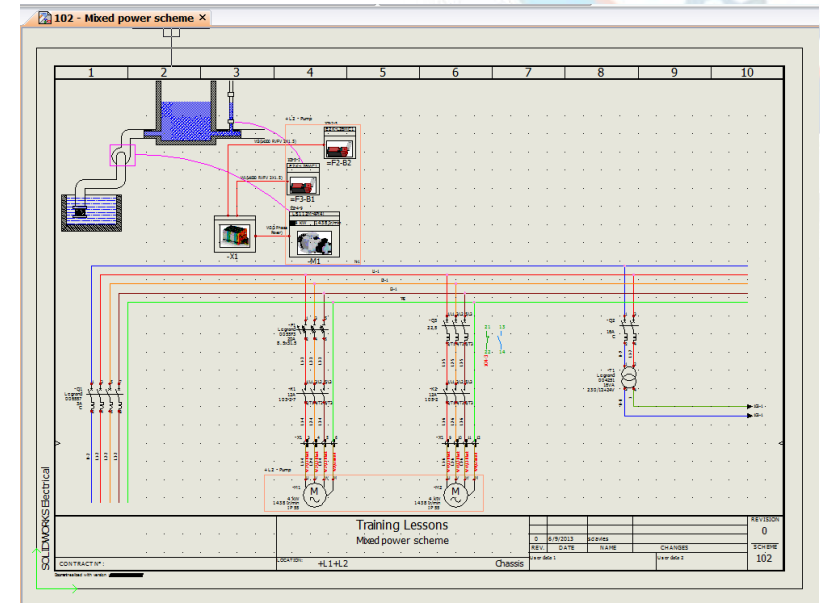
Alternatively consider manufacturers websites for 3D and Symbols

Or Import any existing symbols



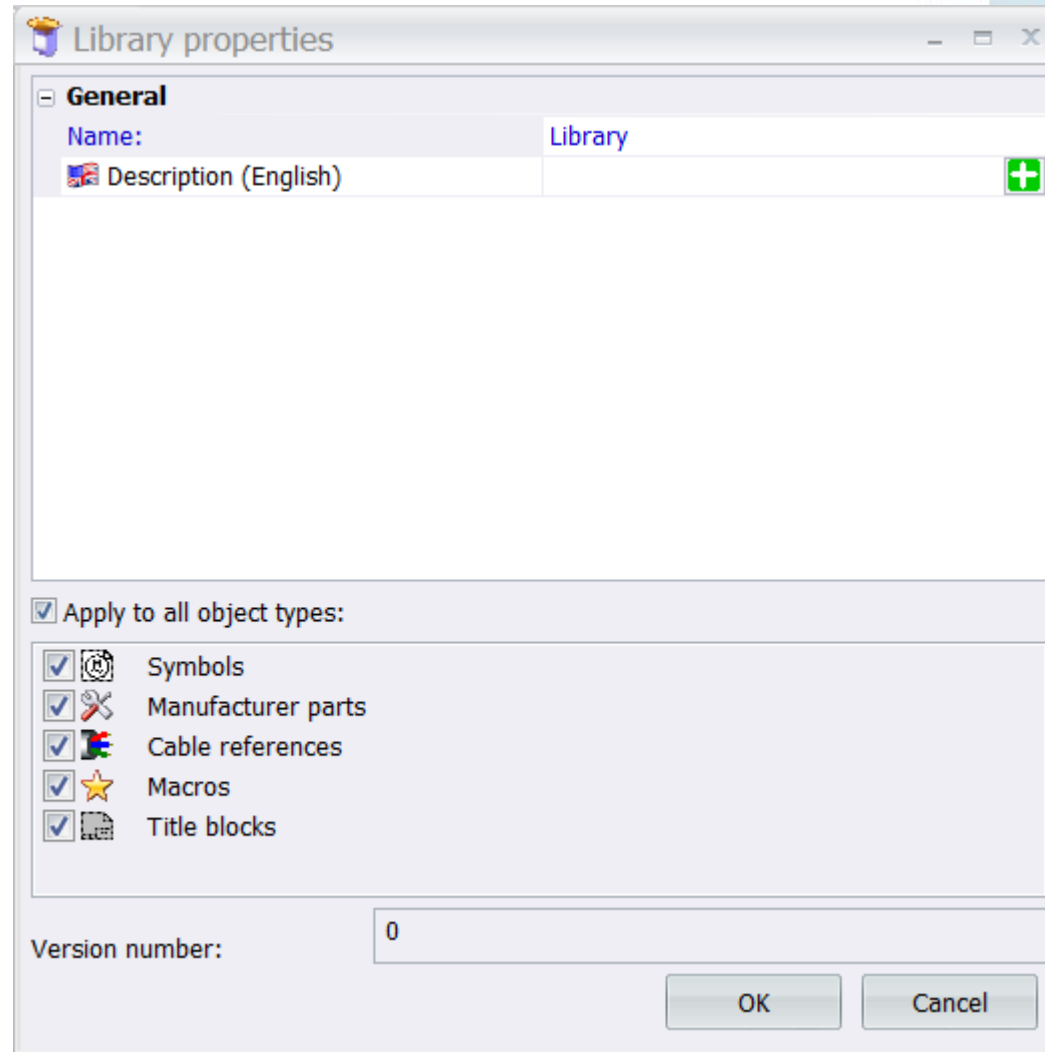
Mixed Schemes(New in 2015)

- Be aware of snapping of symbols
- Can be useful access to more symbols
- Create single and multiline on same drawing



Libraries

- Macros
- Symbols
- Manufacturer Parts
- Cables



Customizing

- Create shortcuts
- Reverse mouse wheel
- Create Macros/symbol Pallets



Thanks for attending:

Call: 1 800 370 3750

Email: support@qintegration.com

Website: www.qintegration.com/support

