



Automating and Managing your Designs

Adam Benson

Engineering Coordinator, CSWE

Quest Integration



Brandon Adkins

Application Engineer, CSWE

Quest Integration



Automating and Managing Designs

Common topics and issues

- Products that are similar, but different
- Time consuming to update by hand
- Confusion in tracking Customer Specific Data or Revised Documents
 - → Lack of standardization in data storage procedure
- Valuable time spent in creating additional data
 - → Export tasks and deliverables for others

Automating and Managing Designs

How can we resolve these?

- Eliminate manual work to configure next customer product
- Define systematic approach to managing different customer products
- Creating an automated system to re-use design data
- Working within a system that standardizes data organization and creation
- Delivering necessary data for manufacturing without manual work

Tools for Automation and Management



SOLIDWORKS

- Intelligent, Parametric Designs
 - Equations
 - Global Variables
 - Design Tables



SOLIDWORKS PDM
Professional

- Standardization
 - Project Templates
- Automation
 - Data Card Inputs to drive design
 - Output Tasks



DriveWorks

- Design automation defined by YOU
 - Form input
 - Product understanding
 - Simple data re-use

Streamlining Design

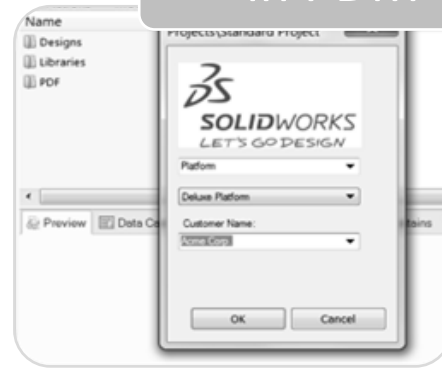


Streamlining Design

- **Quickly design products**
- **Scan and reuse standard designs**
- **Intelligent design logic**



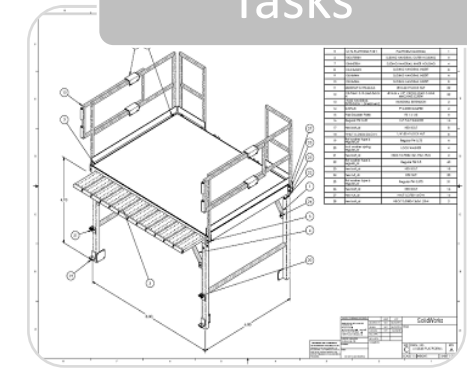
Initial Design



New Projects
in PDM



Design
Automation



Automating
Tasks

Streamlining Design

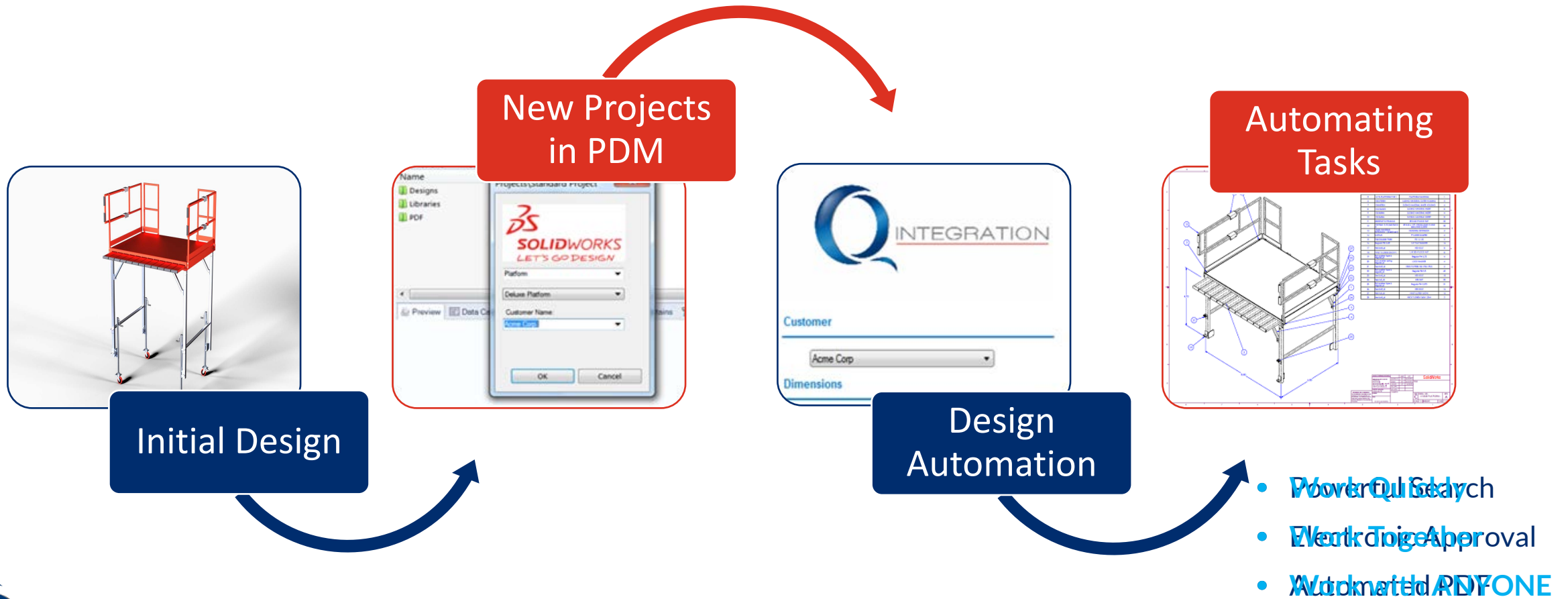


Streamlining Design

- Parametric design capabilities
- Reduced modeling time
- Rip into a network



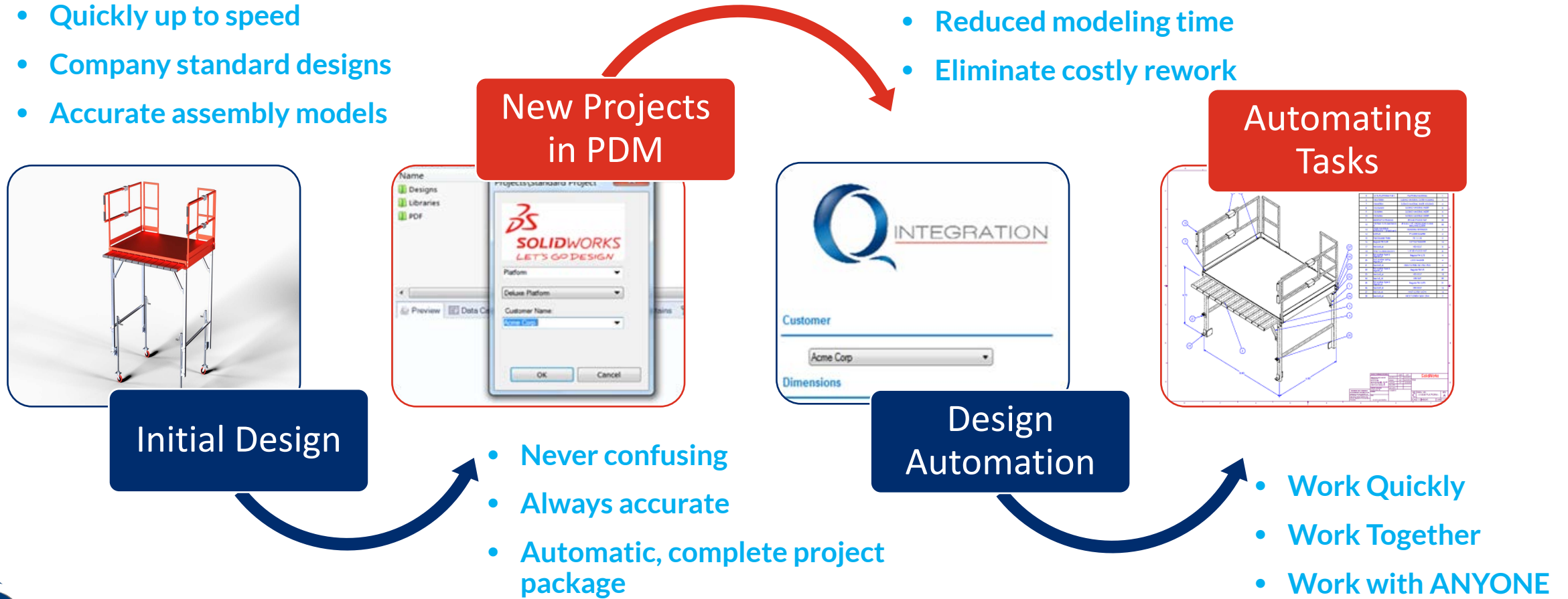
Streamlining Design



Streamlining Design

- Quickly up to speed
- Company standard designs
- Accurate assembly models

- Increased efficiency
- Reduced modeling time
- Eliminate costly rework



Questions

Thank you for attending!



- [Adam Benson](#)
- adam@qintegration.com
- [@adamjbenson8](https://www.linkedin.com/in/adamjbenson8)
- [linkedin.com/in/bensonadam](https://www.linkedin.com/in/bensonadam)

- [Brandon Adkins](#)
- brandon@qintegration.com
- [@bkadkins](https://www.linkedin.com/in/bkadkins)
- [linkedin.com/in/adkinsbrandon](https://www.linkedin.com/in/adkinsbrandon)